

Special Educational Needs and Disability in Peterborough



SEND Update



Dear colleagues,

I hope you are finding the newsletter useful. It certainly does cover a lot of ground. Do let us know if you would like a particular focus or area to be covered.

Since the last newsletter we have had a monitoring meeting for Peterborough's Accelerated Progress Plan undertaken by the DfE and NHS England. The focus is on improving information, opportunities and outcomes for 18-25 year olds and we were able to evidence significant progress in a number of areas across the partnership, including feedback from young people and from families, including through Family Voice.

We are seeing increasing numbers coming forward for statutory assessments and Peterborough is also experiencing increasing numbers of SEND children with education, health and care plans. The Council's SEND and Inclusion teams are working closely with schools and settings to support children and also to deliver plans that are of high quality and timely. It's a testament to all involved that Peterborough's timeliness in issuing plans without any exceptions is the highest in the region and very high compared to national (90.7% for Peterborough compared to 50.7% nationally). The team are also working with schools to see what more can be done to provide more SEND hubs in schools and are visiting a number of schools who are expressing an interest in developing these.

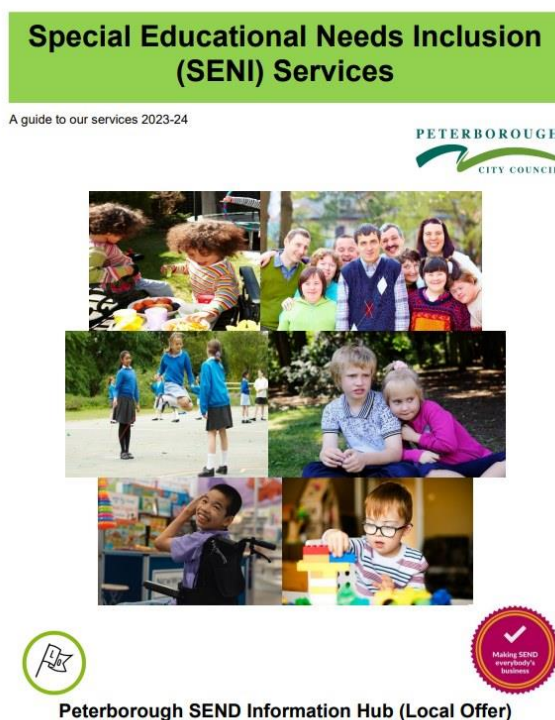
I will conclude this newsletter by saying goodbye to Emma Harkins the Head of SEND and Inclusion who has worked so positively here in Peterborough. We wish Emma well in her new role and thank her for all she has done whilst working here. Emma has made a positive difference in a number of ways and has worked very constructively and openly with parent/carers groups, schools and settings and other services. The Council is in the process of recruiting someone to fill this role and once completed I'll let you know more.

Chris Baird

Interim Director of Education



Peterborough SEN and Inclusion Services (SENI) brochure 2023/24



The [Peterborough SEN and Inclusion Services brochure](#) for this Academic year is now available online.

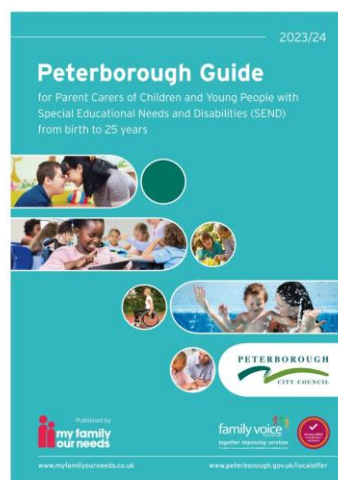
This is a guide to our services with information and FAQs on each service as well as structure charts for the whole service, which have been updated for this academic year. If you have a query regarding the service, you will most likely find it on this brochure ranging from contact details to service information.

You can also find a copy of this on the [SEND Information Hub](#). Please note – the first page is a structure chart for each service and the following pages go into detail about roles / responsibilities and what the service does.

Peterborough Guide for parent carers of children and young people with SEND

The Peterborough Guide has been produced by Peterborough City Council and My Family Our Needs, and co-produced with Family Voice to deliver information, advice and guidance for parent carers and practitioners of children and young people with Special Educational Needs and Disabilities.

The Guide is available online on the [My Family Our Needs website](#) and the [SEND Information Hub](#). A printed copy can also be requested online by emailing: LocalOffer@peterborough.gov.uk.



Peterborough Community Children's Occupational Therapy (OT) Team update



The [Community Children's Occupational Therapy Team](#) are offering a weekly advice line for parents and professionals for those children and young people (0-18 years old) who are currently not known

or open to the service, who may require a referral or support with signposting to universal offers or other services. The 10 minutes advice line slot can be booked by emailing cpm-tr.childrensotcpft@nhs.net.

Please visit the [Peterborough Children's Therapies NHS Facebook Page](#) or website pages for further information:

[Children's Occupational Therapy](#)

[Children's Physiotherapy](#)

[Children's Speech and Language Therapy](#)

Children's Hearing Service Working Group

Are you the parent/carer of a deaf child?

Read this to learn more about the Children's Hearing Service Working Group (CHSWG).

Most parents and carers will know that all newborn babies are offered a hearing screen just after they are born, often before they leave hospital. For some this leads to the identification of deafness and then a journey which will most likely involve health professionals and education professionals begins. Few people know however of the existence of "Children's Hearing Service Working Groups" or CHSWGs as they are usually known but these have also been around, since the Newborn Hearing Screening Programme was launched in 2003.

These working groups bring together local professionals and services working with deaf children, alongside parents and carers, to ensure that everyone's voice is heard and that services meet the needs of deaf children. In the Peterborough area this group is known as the Peterborough and Huntingdon CHSWG and meets three times a year.

If you are the parent/carer of a deaf child and would be interested in having your voice heard through this group, then please contact Sara Brierton, Manager of Sensory and Physical Support Service sara.brierton@peterborough.gov.uk

The CHSWG are conducting a [survey](#) to find out what parents and carers feel should be the focus for this CHSWG group in the next few years.

If you are the parent or carer of a deaf child then please take a couple of minutes to complete this survey. Thank you.

A copy of a British Sign Language interpreted version of the questions is available from Sara Brierton on request.



Free Peer Mentorship Programme - Eddie's Edmund Trust



The Edmund Trust

We at Eddie's (The Edmund Trust in Cambridge) have launched a free new peer mentorship project which aims to support those with and without SEND to meet and share time together, share skills and develop networks. Peer mentorship is evidenced as having a positive impact on the emotional health and wellbeing of young people, and we aim to support just that by developing safe spaces in schools within Cambridgeshire & Peterborough to help young people build confidence, resilience and voice.

We plan to support mentees and their mentors by exploring self-esteem & self-worth, confidence, recognising strengths and making plans to enable positive changes. The project aims to meet at least once a week through a 10-week programme, and we aim to achieve outcomes such as helping people see ability rather than disability, learning and developing social coping skills, working towards dreams and aspirations, and developing person-centred plans through creative activity and discussion. This will be a safe space led by young people, will take place in schools and will be facilitated by Eddie's.

We are currently delivering our programme within schools that have started their own internal peer mentoring projects. We are also supporting mainstream schools link up with SEN provisions to help young people from different settings connect and build friendships. If you would like your child's

school to be involved, would like more info, or have any thoughts or questions, contact Daffy (Peer Mentorship Manager at daffy.shan@edmundtrust.org.uk) and/or Mark (Eddie's Service Manager at mark.briggs@edmundtrust.org.uk)

Service Updates

Disability Social Care 0 – 25 Service and Adult Social Care for young people over 18

Please visit our [0-25 Disability Social Care](#) page and [Adult Social Care for young people aged 18 plus](#) on the Peterborough Information Network.

Supporting Children and Young People with Situational (Selective) Mutism framework

The framework for [Supporting Children and Young People with Situational \(Selective\) Mutism](#) has been updated by health and education professionals within Cambridgeshire and Peterborough. In response to feedback received the original flow chart has been adapted and streamlined in order to ensure that it is easy to follow and offers clear guidance on how to support a child or young person with Situational (Selective) Mutism. Further links have been added to support settings if they have additional concerns.

The information and online training will increase your awareness and how to identify Situational (Selective) Mutism at the earliest opportunity. The second part of the framework provides more detailed guidance on implementing a small steps programme of intervention.

A diagnosis is not needed for the adults around the child or young person to access the support recommended on the framework.



Preparing for Adulthood (PfA) Updates



Please have a look at our newly produced [Top tips for families or carers leaflet](#) to help you navigate the pathways to independence , employment, community engagement and friendships and good health with your child or young person.

If you need any help with these pathways, we have a PfA Helpline on the first Wednesday of every month from 1pm to 3pm.

Call **07920160256** or email elizabeth.sullivan@peterborough.gov.uk.

Every year we produce a [Post 16 Education Offer](#) which lists all of the courses for our SEND young people that are on offer outside of the mainstream offer. I am not sure of any other local authority that produces such a comprehensive list of courses. There are just under 100 courses on offer. You will be able to see the progression routes for each course also. We are very proud to have been working with our post 16 colleges and are not surprised by their recent Ofsted ratings. Peterborough and Stamford Colleges are now an Academy under the Aspire Group and their High Needs Department received an outstanding rating. There are only 5 colleges out of 170 colleges in England that have this rating. City College also received a good and just missed out on outstanding for High Needs. I hope this gives you some confidence about the quality of the provision for your young person as they transition into Post 16 Education.

I would also like to signpost you to all the information about preparation for adulthood that we have on our [Peterborough Information Network](#) (PIN). We regularly update this information. For more information please contact elizabeth.sullivan@peterborough.gov.uk (SEN Lead Post 16).

The Peterborough Early Years SEND Specialist and Portage Service team



1 - A Portage Service registered with the National Portage Association

The National Portage Association (NPA) had a recent profile lift with a visit from the royals (please see link below). As an NPA registered Portage Service, we are very proud regarding this visit. The Peterborough Early Years SEND Specialist and Portage Service team also attended some Summer family days at our parks in Peterborough. These were well attended, and fun was had by all! We also celebrated 40 years of the NPA this year.

[Royals visit National Portage Association.](#)



2 - Peterborough Early Years SEND Specialist and Portage Service team Summer family days



3 - Peterborough Early Years SEND Specialist and Portage Service team Summer family days



4 - Peterborough Early Years SEND Specialist and Portage Service team Summer family days



5 - Peterborough Early Years SEND Specialist and Portage Service team Summer family days

A Welcome to new PCC Area SENCO

"I wish to take this opportunity to introduce myself, Gemma Mead, as the new Area SENCO for Peterborough City Council. Inclusion is central to my ethos, and I am looking forward to working with our settings to ensure every child in Peterborough is included and successful in their education and beyond to adulthood. My experience in education includes working as a dedicated SENCO and teacher across primary and secondary settings and I firmly believe that communication, collaboration and collective responsibility are key to sharing best practice so that everyone is able to be the very best that they can be."

Parent participation

Peterborough and Cambridgeshire Special Educational Needs and Disabilities Information, Advice, Support Service (SENDIASS)



Peterborough and Cambridgeshire Special Educational Needs and Disabilities Information, Advice, Support Service (SENDIASS) provides information, advice and support to parents, children and young people regarding Special Educational Needs and Disabilities (SEND).

SENDIASS can offer:

- Impartial advice and information about Special Educational Needs and Disabilities.
- Advice and support for parents, children and young people navigating the Special Educational Needs processes.
- Advice and support for parents and young people to work collaboratively with schools, education, health and children's services, and other professionals.
- Inform and signpost parents and young people to other available support services and organisations.
- Advice and support for parents and young people in resolving disagreements – support through mediations and tribunals.

Contact: **0300 365 1020** or Email SENDIASS@peterborough.gov.uk

Family Voice Peterborough (FVP)

Family Voice Peterborough is working hard to improve the services for children/young people with SEND and their families.

Please check their website and social media pages for surveys, the parent carer hub sessions with SENDIASS and other services as well as events. If you would like any help and support, are unsure of the services available for your child/young person, contact Family Voice on **01733 685510** or visit [Family Voice website](#).

[Family Voice Peterborough on Twitter \(X\)](#)

[Family Voice Peterborough on Facebook](#)

[A guide to supporting your neurodiverse child](#) - Family Voice

Join Family Voice on 20 of December 2023 for an Activity World session and 16 February 2024 for our networking event!



Peterborough Little Miracles Charity – activities timetable



What do Little Miracles Charity do?

“Our Childcare Teams, Family Support Workers and Counsellors provide activities, training, advice and safe-spaces to the whole family even before they receive a formal diagnosis. This includes everyone - the children, their parents, carers and siblings.”

More information can be found on the [Little Miracles website](#), where you can also find the [activities timetable for the Autumn term](#). There is a wide range of activities throughout Monday to Friday.

For more information about the activities please call **01733 262226** or email childcare@littlemiraclescharity.org.uk

Events and activities

College Open Evening dates 2023/2024



City College:

- 6 December 2023 | 4pm to 6pm
- 2 April 2024 | 10am to 1pm



Peterborough College:

- 17 January 2024 | 5.30pm to 7.30pm
- 27 March 2024 | 5.30pm to 7.30pm



Stamford College:

- 24 January 2024 | 5.30pm to 7.30pm
- 20 March 2024 | 5.30pm to 7.30pm

Vivacity SEND Activities and Inclusive Leisure

SEND out of school hours sessions

Vivacity runs term-time sessions and holiday clubs for children and young people aged 7-19 with special educational needs or disabilities (SEND), providing opportunities to spend time with their peers.

We feel it is important for children and young adults to come together to be social, engage in activities and support each other. We understand that a lot of children and young adults with SEND can often feel isolated in other mainstream environments, but at [Vivacity short breaks sessions](#) they can develop social skills, make their own choices on activities they'd like to do and make friends.



Inclusive Sports

Our programme engages and works with young people and adults with disabilities to increase their participation in sport.

Vivacity's exercise services for children and young adults with disabilities focuses on more than just delivering great sporting opportunities, we aim to develop both physical, mental and social skills in all of our sessions. Participants can expect solid support from our experienced friendly staff who help to ensure they benefit from fun, friendships and fitness. Our [inclusive disability sports programme](#) aims to build confidence, strength and long term life skills.

Peterborough Museum and Art Gallery – What's on!



Shh Sundays at Peterborough Museum & Art Gallery

“Join us on a Shh Sunday (the first Sunday of the month) at Peterborough Museum & Art Gallery, ideal for anyone looking for a quieter or more relaxed visit.

Busy museum galleries and noisy interactives can have an impact on visitors with sensory access requirements. Therefore we have launched Shh Sundays where we offer a quieter museum visit. All of our interactives and gallery sounds will be switched off, the lighting adjusted (where possible) and visitors will be asked to wander our galleries mindful of others. There will also be a quiet space set aside for those who wish to escape the noise completely.

Everyone is welcome, however these Shh Sundays are tailored for – but not limited to – children, young people and adults with autism; people with social, emotional, or mental health needs; adults living with dementia; and any other visitors with sensory needs or who may prefer a calmer experience.

We certainly don't expect you to be silent though – we hope you have fun exploring the museum galleries and really enjoy your visit!”

Socially Accessible - Community Gallery exhibition

“The exhibition runs from 12 October 2023 to 22 December 2023

An engaging exhibition that focuses on a 50-year period where the growth of user lead organisations pushed for not just legislative change but a change in attitudes towards disabled people.

This exhibition has been developed in partnership with Peterborough's Disability Forum facilitated by PCVS, with particular support from RNIB, Scope, Shine, along with contributions from other groups and individuals.

View the [Museum and Art Gallery 'Shh Sundays' web page](#) for more details.”

Socially Accessible

12 Oct – 22 Dec 2023



Music Inclusive



A Saturday Music Group for young people of ALL abilities

Fun, multi-sensory music making sessions for children and young people with additional needs and their families. Each session will have a theme which we will explore through sound, music making and multi-sensory elements to maximize opportunities for participation and creativity.

Free to attend and held Weekly, term time only on Saturday's at Ormiston Bushfield Academy, Orton Centre.

Juniors: 10:30am to 11am

Seniors: 11:15am to 12:15pm

Email musichub@peterborough.gov.uk for more information

Sensory Learners Group

Sensory Learners Group is held every Thursday 1pm to 2pm at Fulbridge Child and Family Zone, Keeton Road.

This will consist of:

- Singing, using props and scarfs
- Messy play ideas to support sensory development
- Top tips for supporting children's learning
- Time for parents/carers to relax and chat with other families

Limited spaces available. Please book by visiting [Barnardo's Facebook page](#) and click on 'Book Now'.

For more information visit Peterborough Early Years SEND specialist and Portage service closed Facebook group.

Email claire.webb@barnardos.org.uk or sobia.sada@peterborough.gov.uk, or call 07870 152443 for more information.

